

# D6000 Swing Gates



## SPECIFICATION

### MAXIMUM SPAN

14M (7m per leaf)

### MAXIMUM HEIGHT

5.0m (Depending on span)

### CONSTRUCTION

Up to 4.0m leaf - 80 x 80 Box section, Up to 7.0m leaf - 100 x 100 Box section

### POSTS

From 120mm to 250mm box section, depending on gate leaf dimensions

### OPENING/CLOSING TIME

6 - 20 seconds (Adjustable)

### DRIVE CHOICES

D380HD Above ground drives for leaves up to 8.0m  
BFT Guino Hydraulic rams for leaves up to 4.0m  
(Roger Technology Rams available.)

### SAFETY

Cat 3 Edges as standard with Dual Photocells and a flashing beacon/sounder

### CYCLES

100 % Duty Cycle

### POWER SUPPLY

230vac 50hz 6Amp



## HEAVY DUTY BEARING HINGES

High load bearing equipped hinges are fitted which rotate on the pivot point to minimise closing up of the gate leaf to the post, and so enhancing safety.



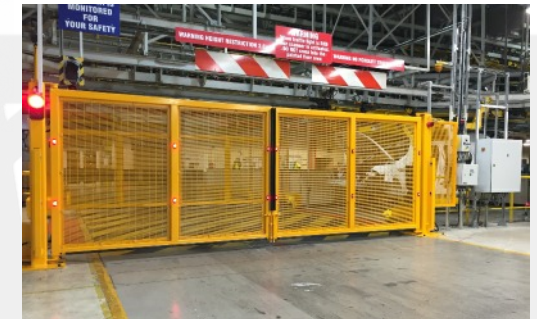
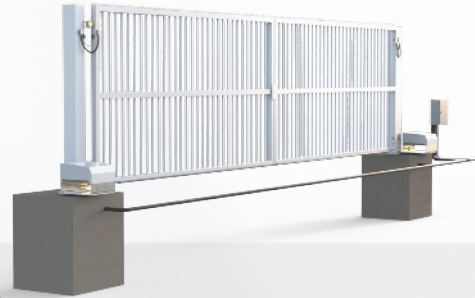
## FIXING OPTIONS

Gates can be supplied with dig-in or bolt down posts.



## AUTOMATION OPTIONS

A range of drive options is available including hydraulic rams, heavy duty above ground drive units.



## FINISH

Swing gates are powder coated in any standard RAL colour at no additional charge.

## TWIN PHOTOCELLS

Safety first. All our powered gates are equipped with class leading safety systems as standard. For the D6000, this includes 6 x Cat. 3 safety edges, twin photocells at different heights, a cabinet mounted Emergency Stop button and a flashing beacon/sounder. Working with our unique control software this provides the quickest response to a safety event in the industry.

